

# Making a table and plotting points given a unit rate: Worksheet 1.1

Name ..... Date ..... Score .....

The relationship between input and output having unit rate is given by the following equation. Make a table and plot 5 points.

1.  $y = 3x$

2.  $q = 2p$

3.  $h = (1/3)g$

4.  $n = 6m$

5.  $y = x + 2$

6.  $t = 10s$

7.  $v = 2u + 3$

8.  $d = 9c$

9.  $k = 3j - 1$

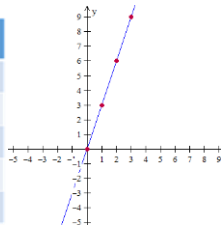
10.  $w = 5v$



# Solutions: Worksheet 1.1

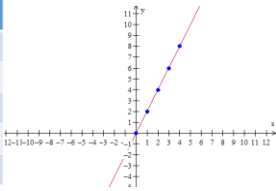
1.

Input (x)	Output (y)
0	0
1	3
2	6
3	9
4	12



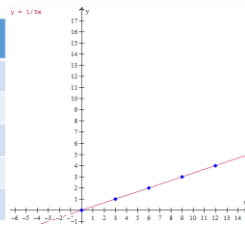
2.

Input (p)	Output (q)
0	0
1	2
2	4
3	6
4	8



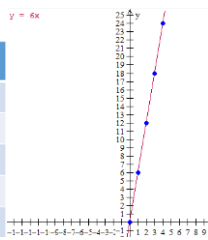
3.

Input (g)	Output (h)
0	0
3	1
6	2
9	3
12	4



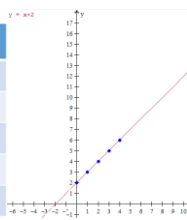
4.

Input (m)	Output (n)
0	0
1	6
2	12
3	18
4	24



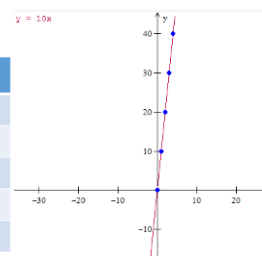
5.

Input (x)	Output (y)
0	2
1	3
2	4
3	5
4	6



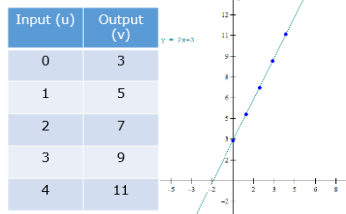
6.

Input (s)	Output (t)
0	0
1	10
2	20
3	30
4	40

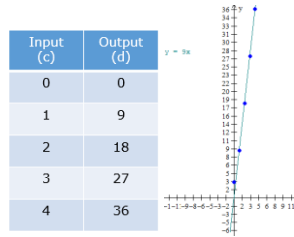


# Solutions: Worksheet 1.1

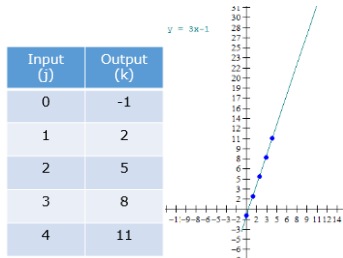
7.



8.



9.



10.

